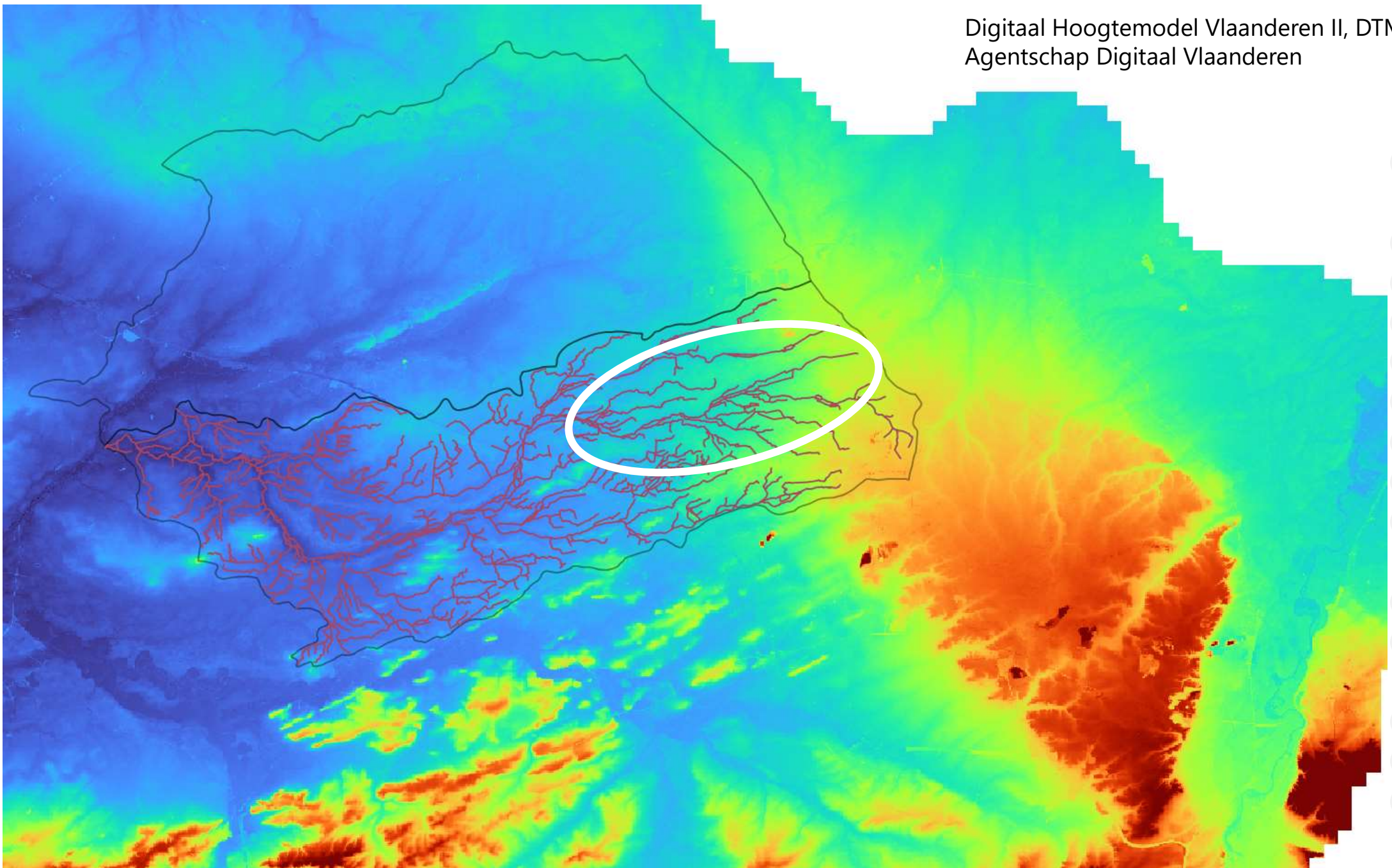
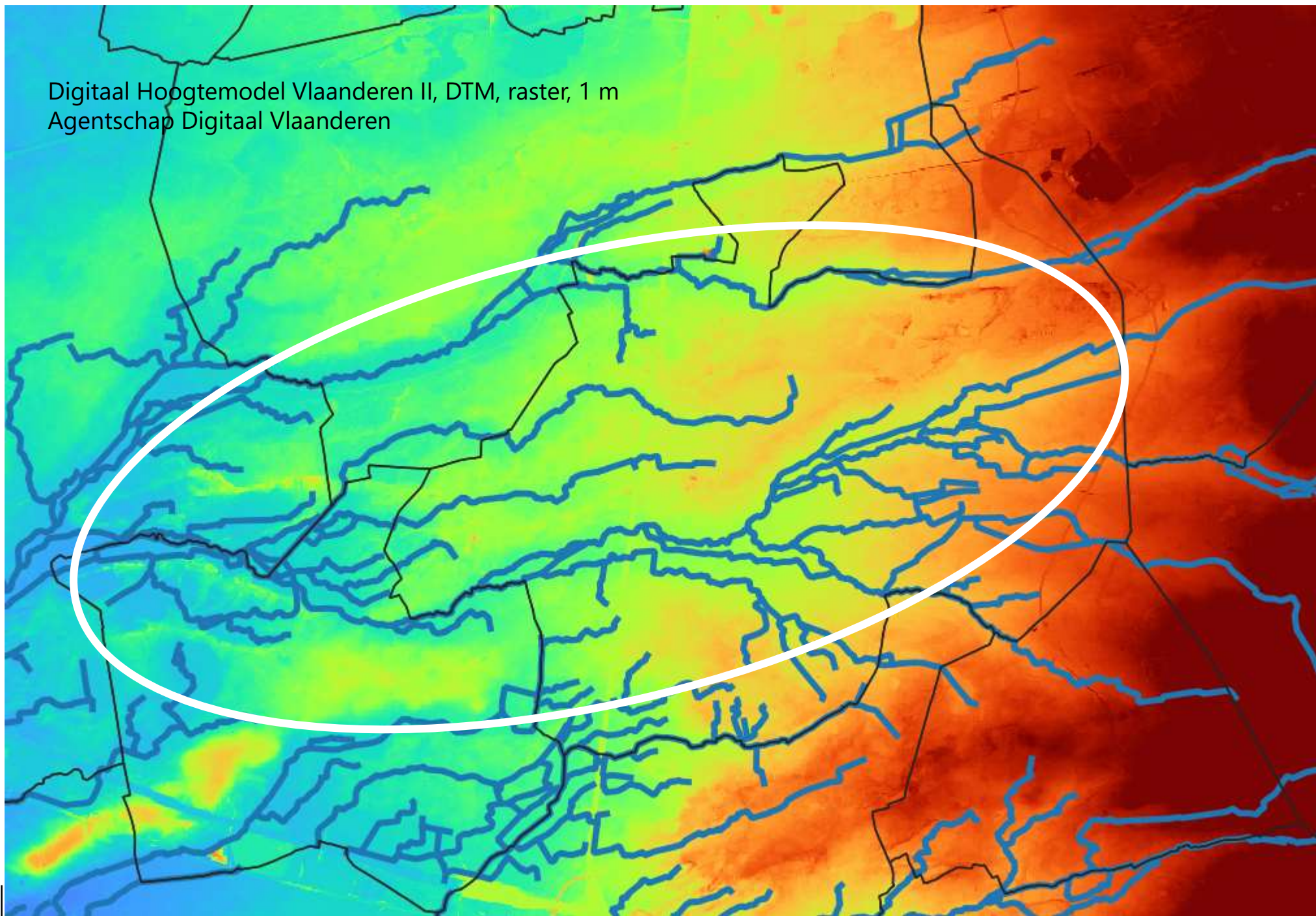




# Landschapsgenese in het bovenstroomse gebied van het Grote Netebekken



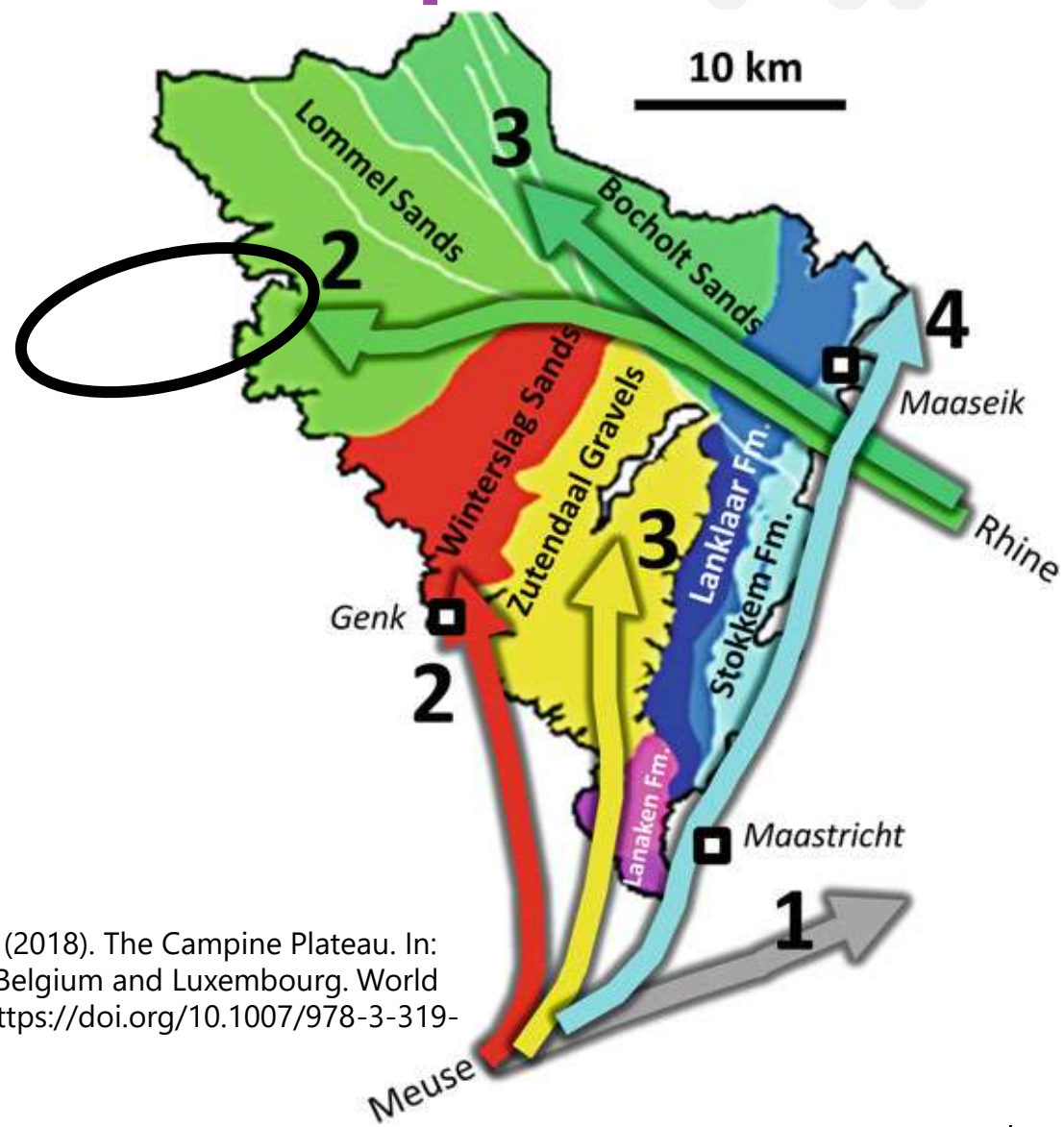
Digitaal Hoogtemodel Vlaanderen II, DTM, raster, 1 m  
Agentschap Digitaal Vlaanderen



# Vroege geschiedenis van het landschap

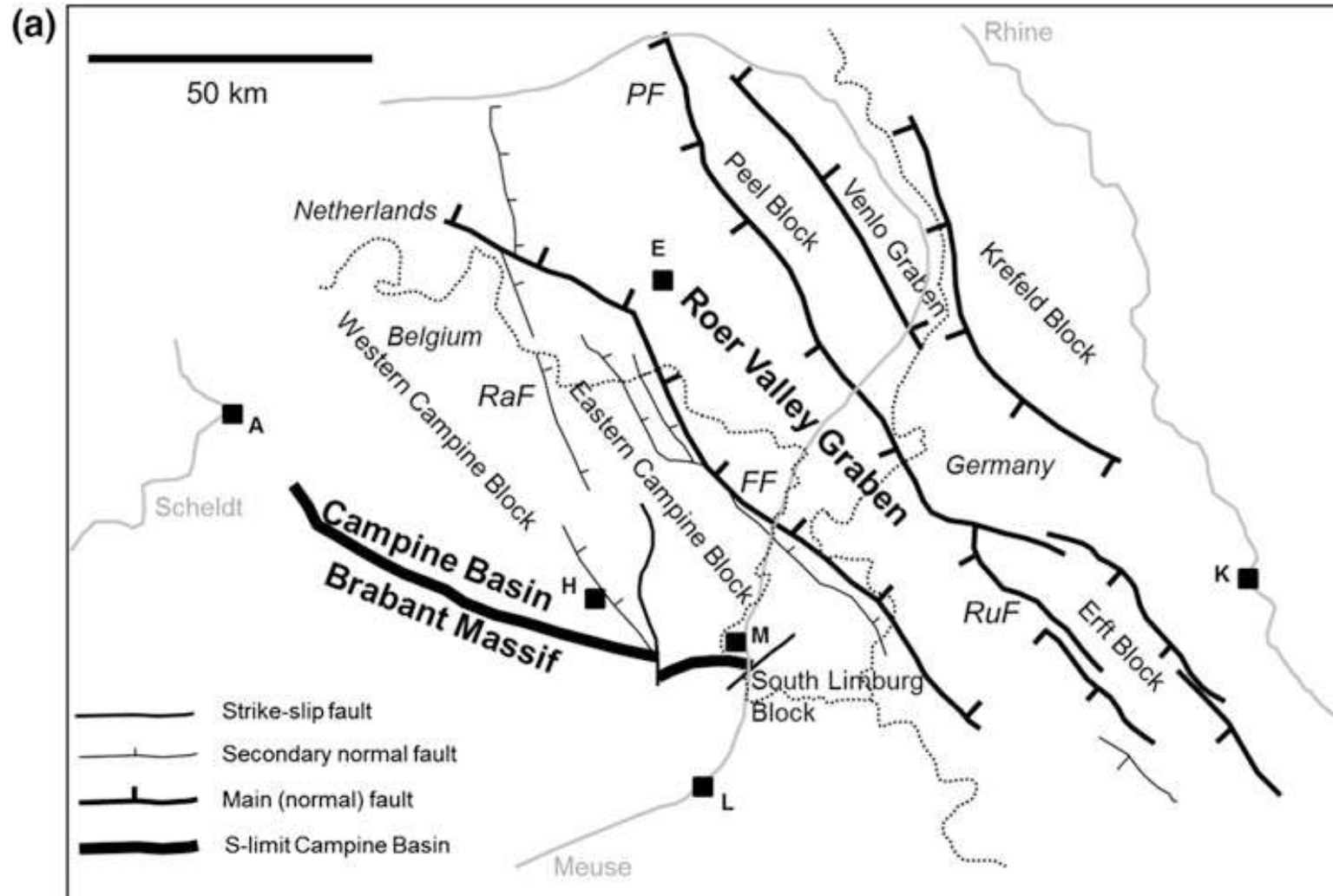
## Maas en Rijn

- 1: tracé van de **Maas** > 1 Mjr geleden
- 2: tracé van de **Maas** en **Rijn** tot ongeveer 700 à 800 duizend jaar geleden
- 3: tracé van de **Maas** en **Rijn** ongeveer 600 duizend jaar geleden
- 4: tracé van de **Maas** gedurende het laatste half miljoen jaar



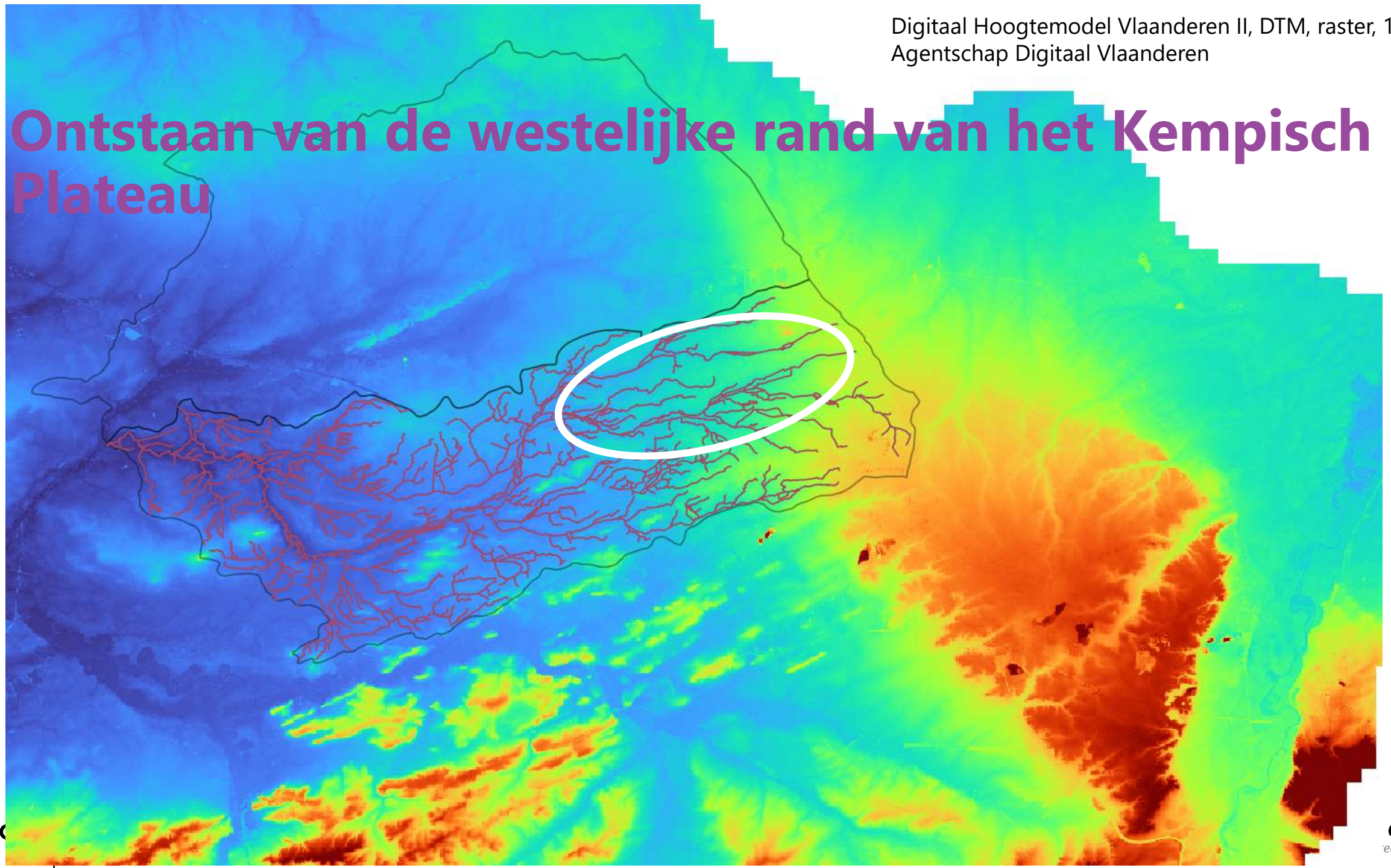
Beerten, K., Dreesen, R., Janssen, J., Van Uytven, D. (2018). The Campine Plateau. In: Demoulin, A. (eds) Landscapes and Landforms of Belgium and Luxembourg. World Geomorphological Landscapes. Springer, Cham. [https://doi.org/10.1007/978-3-319-58239-9\\_12](https://doi.org/10.1007/978-3-319-58239-9_12)

# Gerelateerd aan tektonische bewegingen

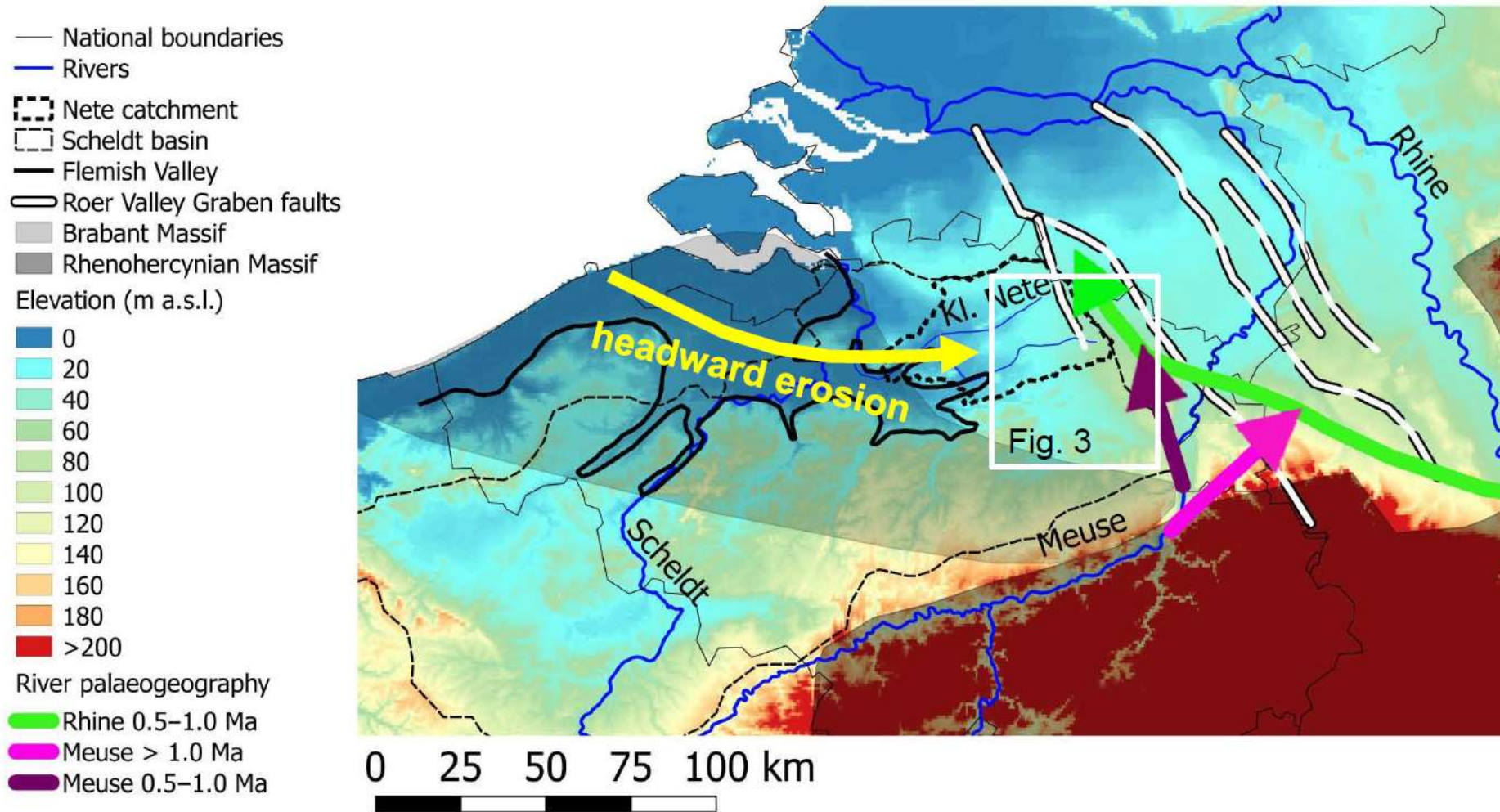


Beerten, K., Dreesen, R., Janssen, J., Van Uytven, D. (2018). The Campine Plateau. In: Demoulin, A. (eds) Landscapes and Landforms of Belgium and Luxembourg. World Geomorphological Landscapes. Springer, Cham.  
[https://doi.org/10.1007/978-3-319-58239-9\\_12](https://doi.org/10.1007/978-3-319-58239-9_12)

# Ontstaan van de westelijke rand van het Kempisch Plateau



# Terugschrijdende erosie waarbij een dalhoofd zich verplaatst (in oostelijke richting)



Laloy, E., Beerten, K., Vanacker, V., Christl, M., Rogiers, B., and Wouters, L.: Earth Surf. Dynam., 5, 331–345, <https://doi.org/10.5194/esurf-5-331-2017>, 2017.

# Gebeurtenissen in het Kanaal

Opening van het Kanaal door plotse drainage van proglaciaal meer

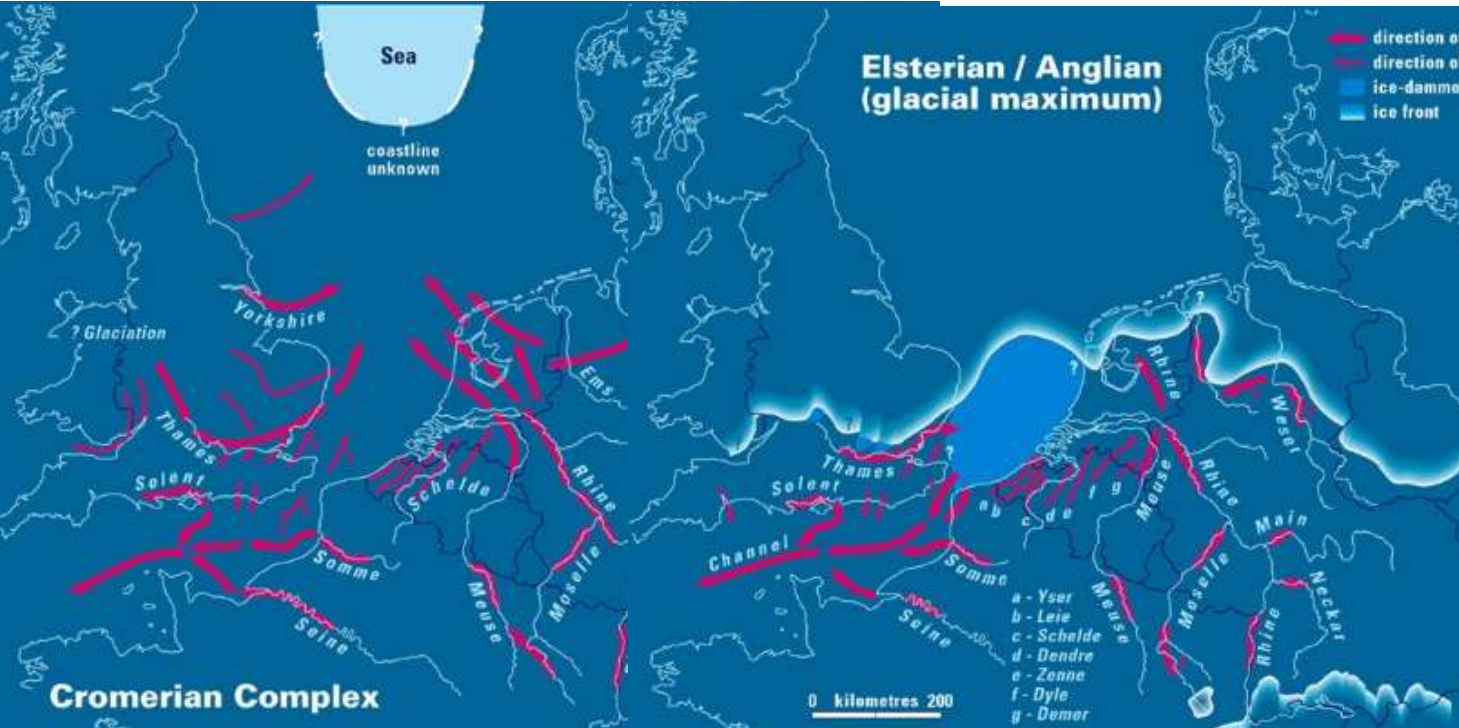
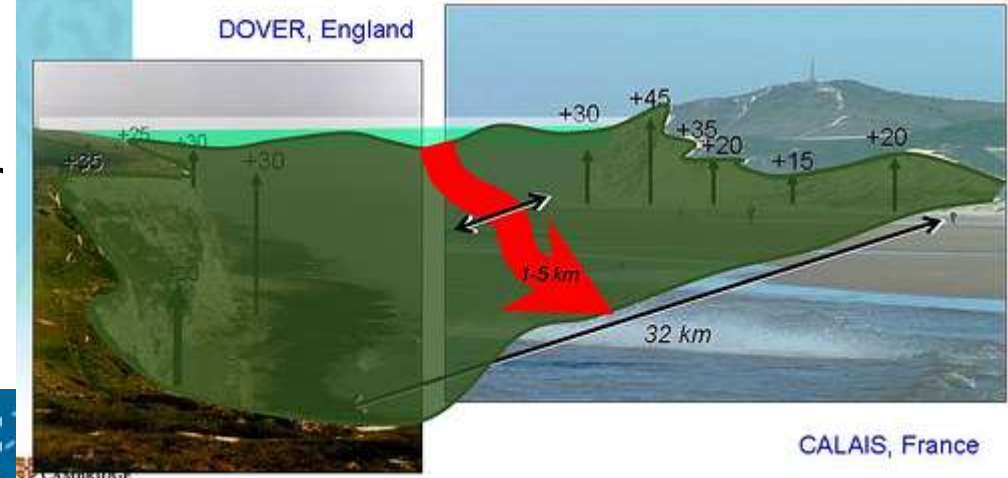
- Land-engte tussen GB en F verdwijnt
- Thames, Rijn, Maas stromen nu allemaal naar zuiden, doorheen het Kanaal

<https://www.qpg.geog.cam.ac.uk/research/projects/nweurorivers/>



## Strait of Dover - Pas de Calais

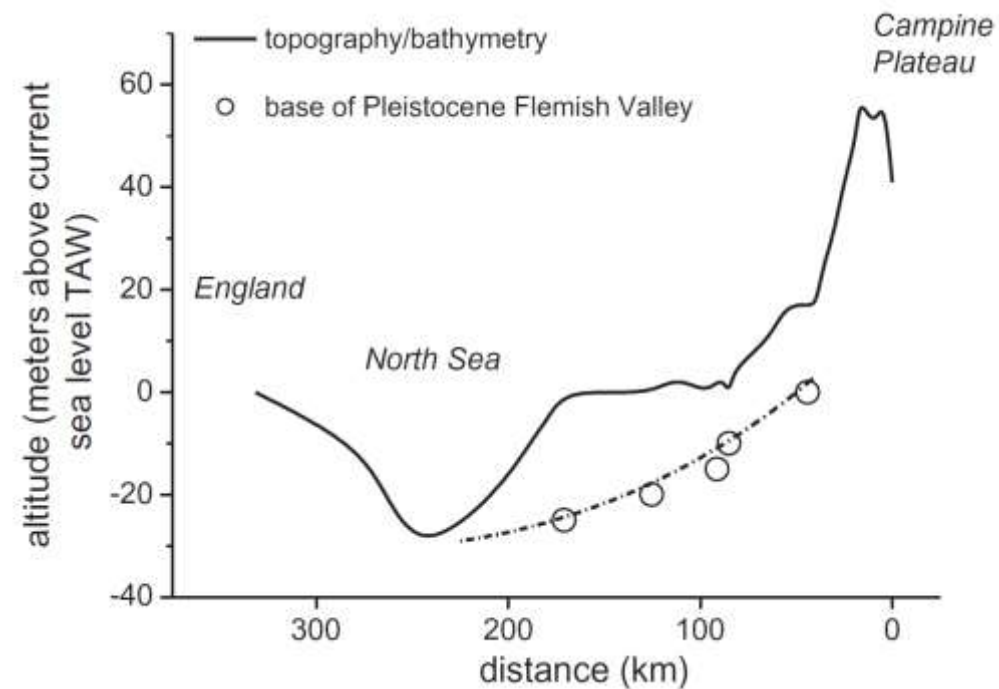
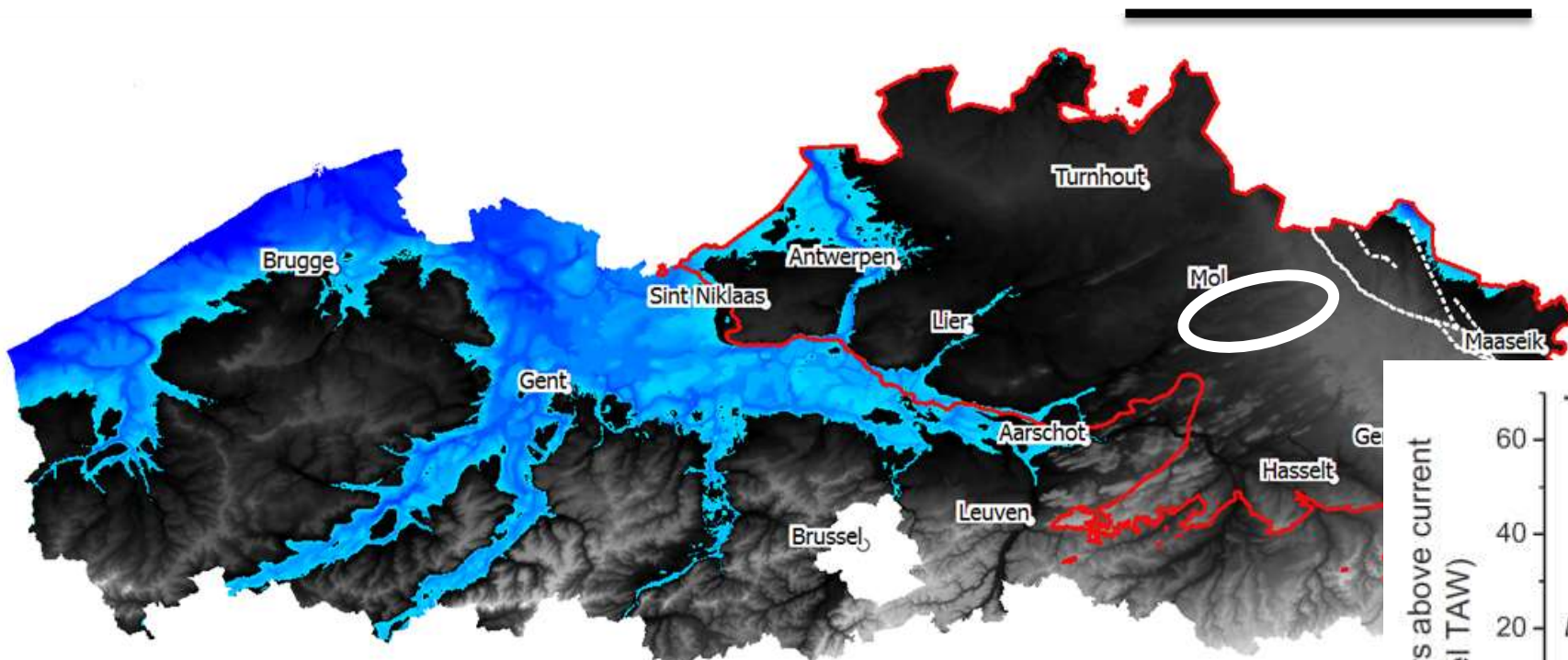
Col ridge height: ~25 - 30 m





# Vorming van de 'Vlaamse Vallei'

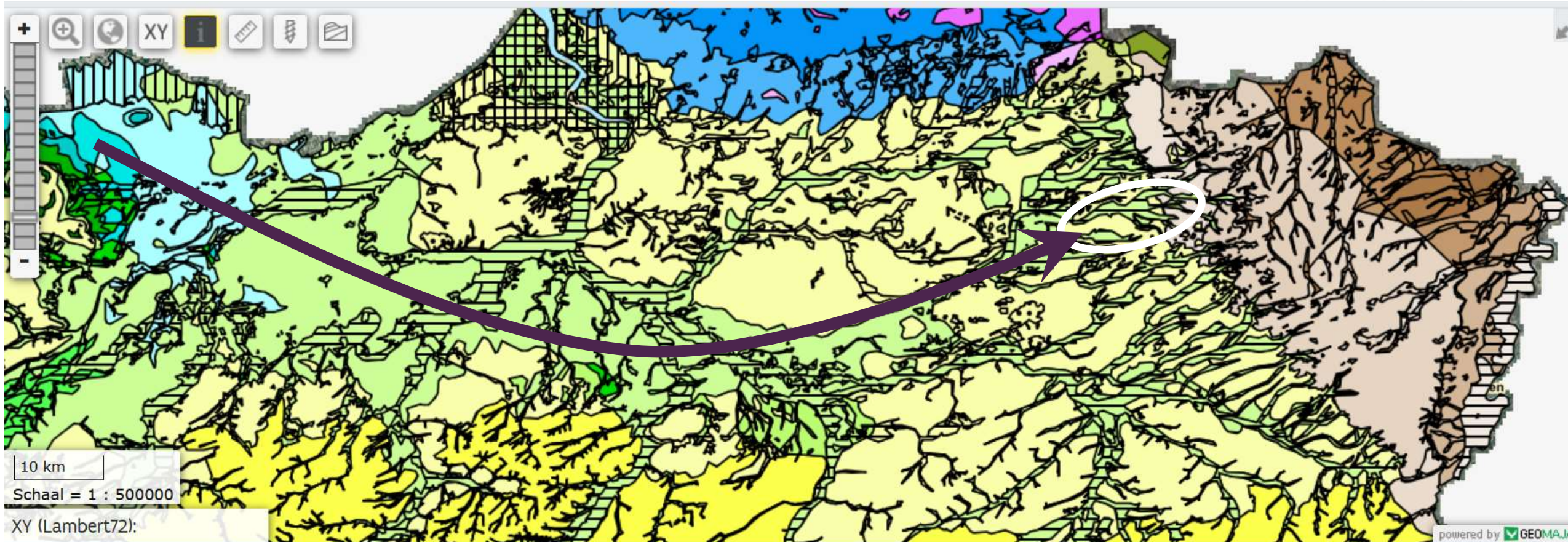
60 km



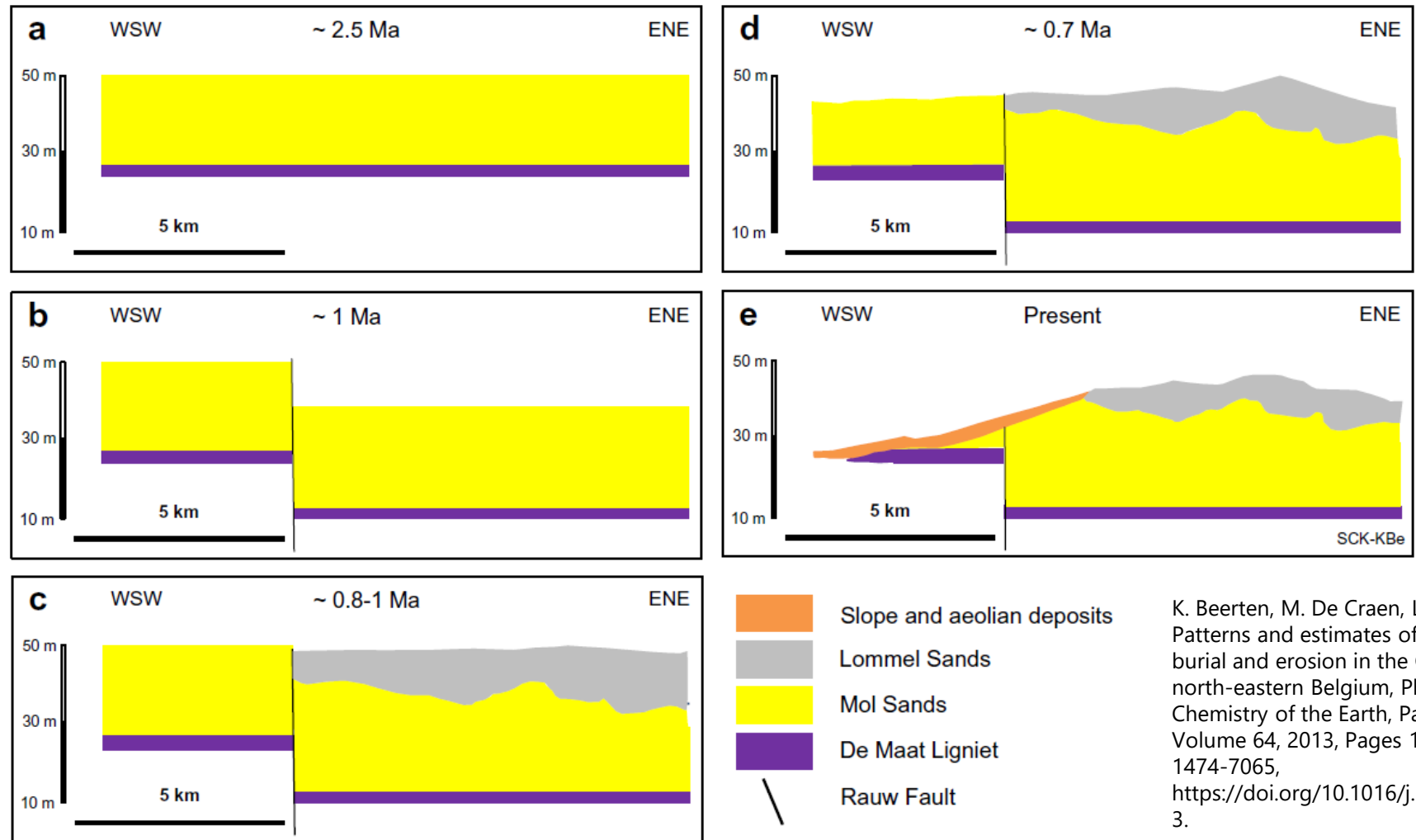
K. Beerten, M. De Craen, L. Wouters, Patterns and estimates of post-Rupelian burial and erosion in the Campine area, north-eastern Belgium, Physics and Chemistry of the Earth, Parts A/B/C, Volume 64, 2013, Pages 12-20, ISSN 1474-7065, <https://doi.org/10.1016/j.pce.2013.04.003>.

# Bovenloop Grote Nete is oostelijke uitloper van Vlaamse Vallei

Databank Ondergrond Vlaanderen  
Quartaargeologische profieltypekaart 1:50.000



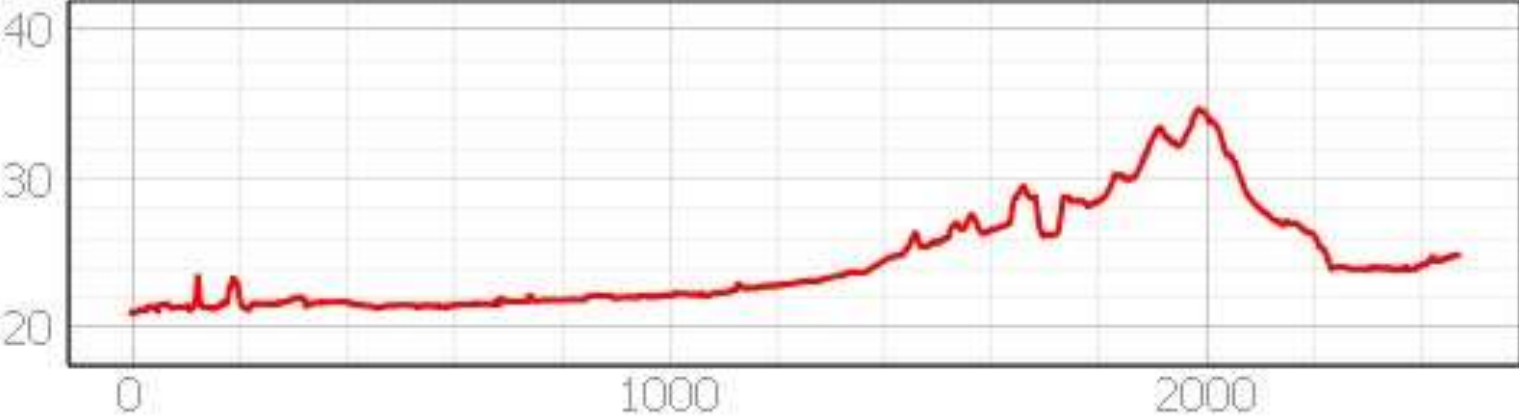
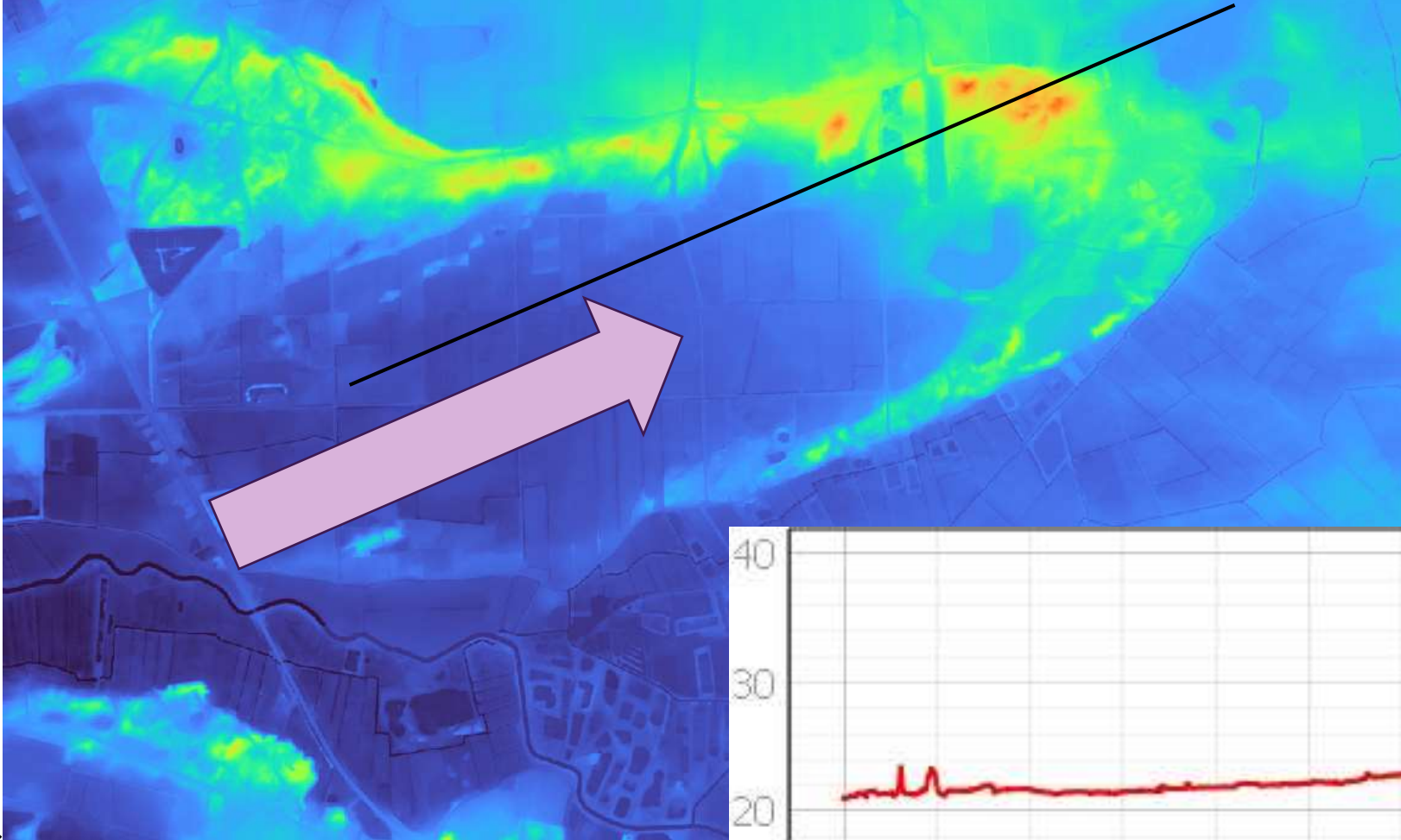
# 2.5 miljoen jaar evolutie langsheen de westeloijke rand van het plateau



K. Beerten, M. De Craen, L. Wouters, Patterns and estimates of post-Rupelian burial and erosion in the Campine area, north-eastern Belgium, Physics and Chemistry of the Earth, Parts A/B/C, Volume 64, 2013, Pages 12-20, ISSN 1474-7065, <https://doi.org/10.1016/j.pce.2013.04.003>.

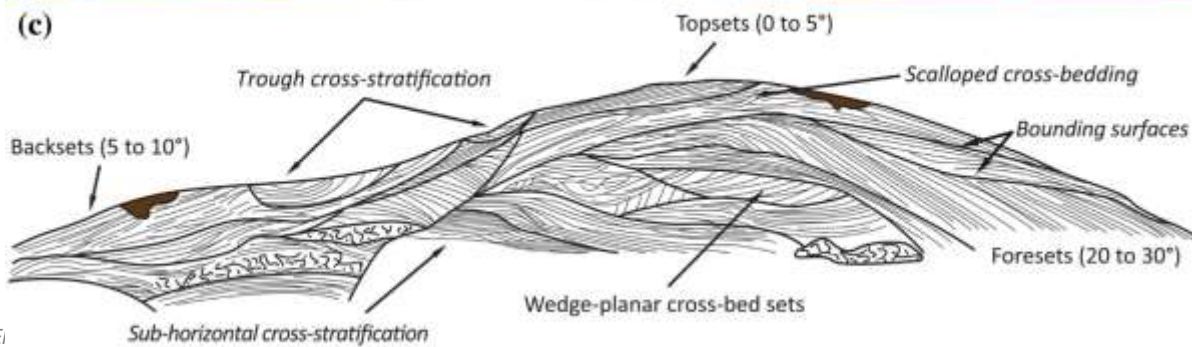
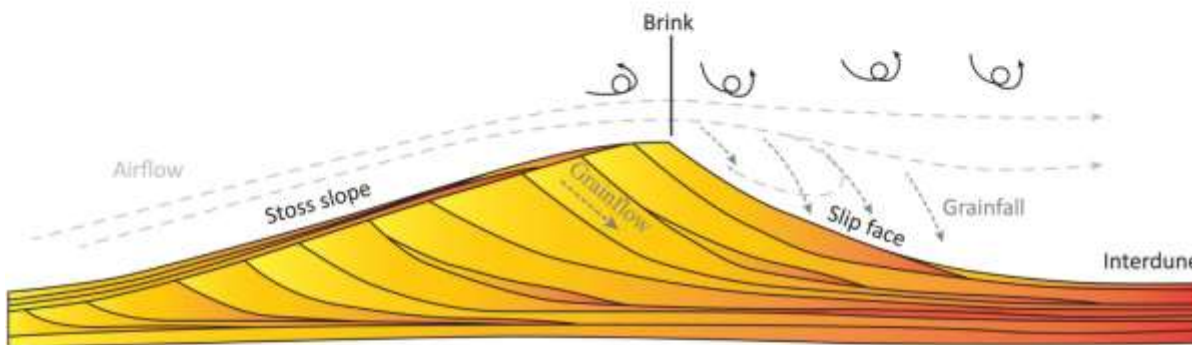
Digitaal Hoogtemodel Vlaanderen II, DTM, raster, 1 m  
Agentschap Digitaal Vlaanderen

# Paraboolduinen uit het Laat Glaciaal ~ 12000 jaar geleden





(b) Windward slope      Crest      Leeward slope



■ Terra rossa paleosol

☞ Protocol

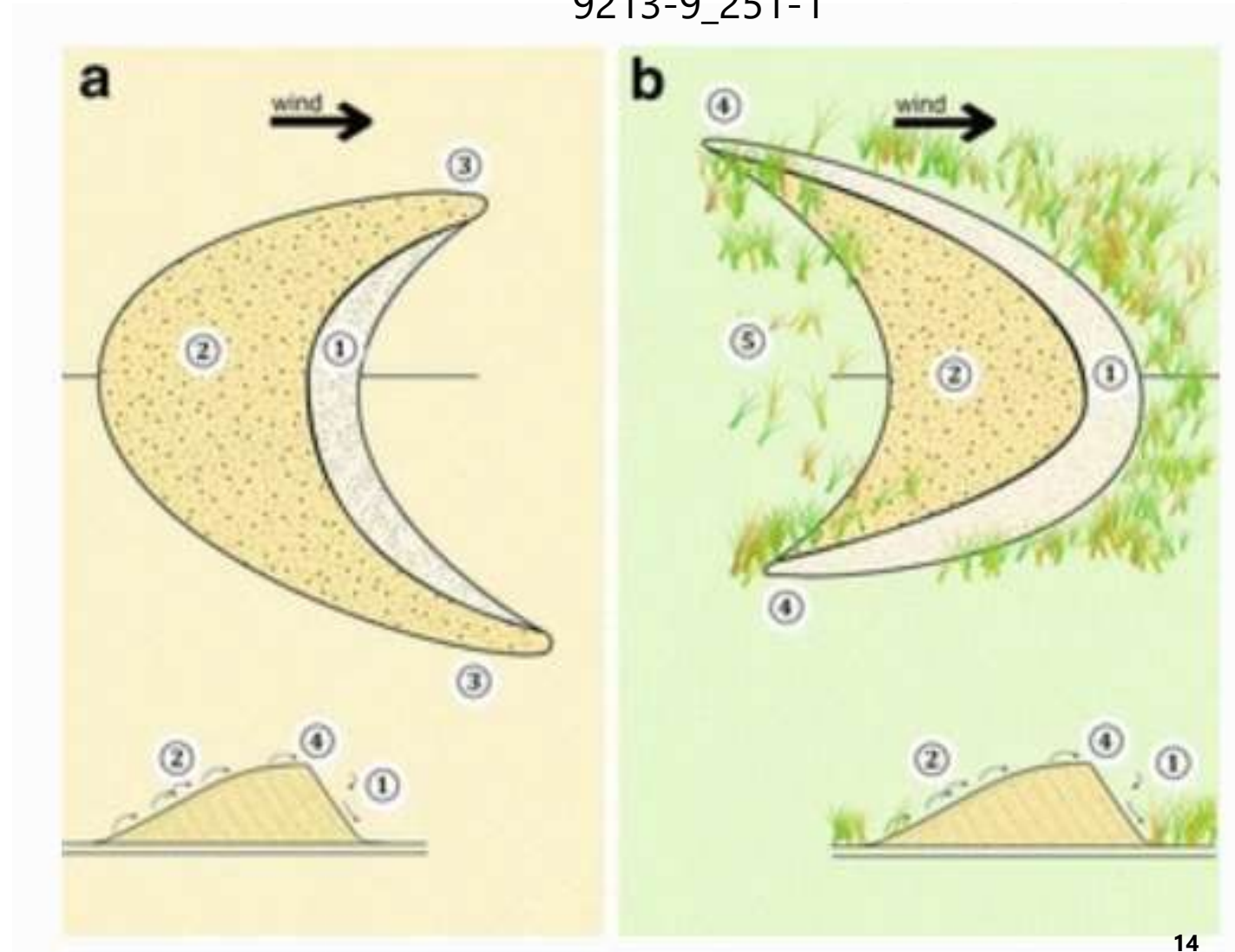
□ Aeolian deposits

Vimpere, ESPL 2023  
<https://doi.org/10.1002/esp.5648>

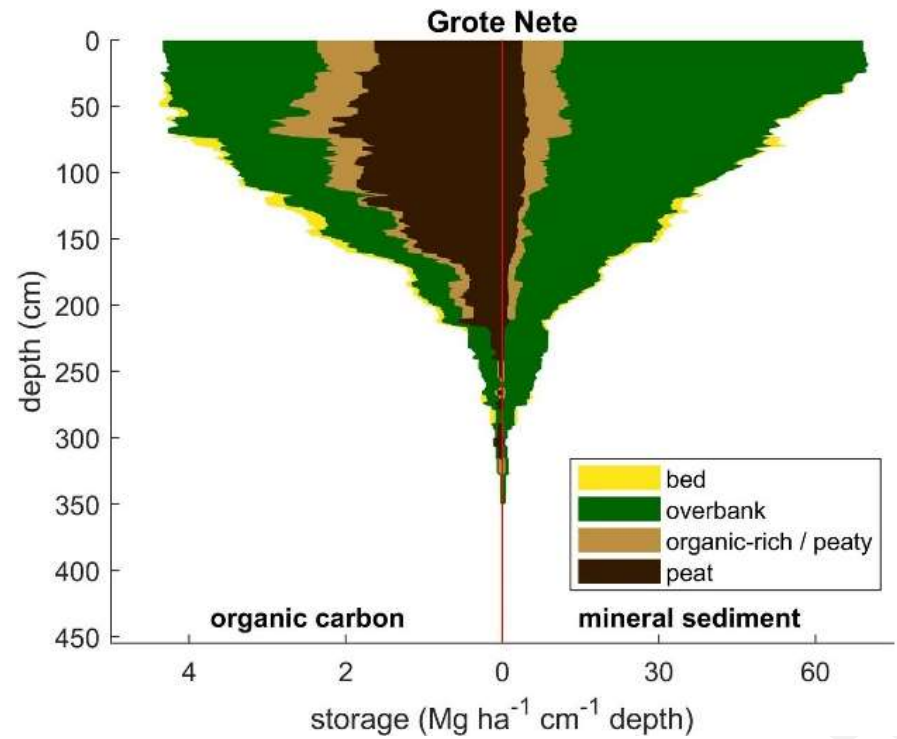
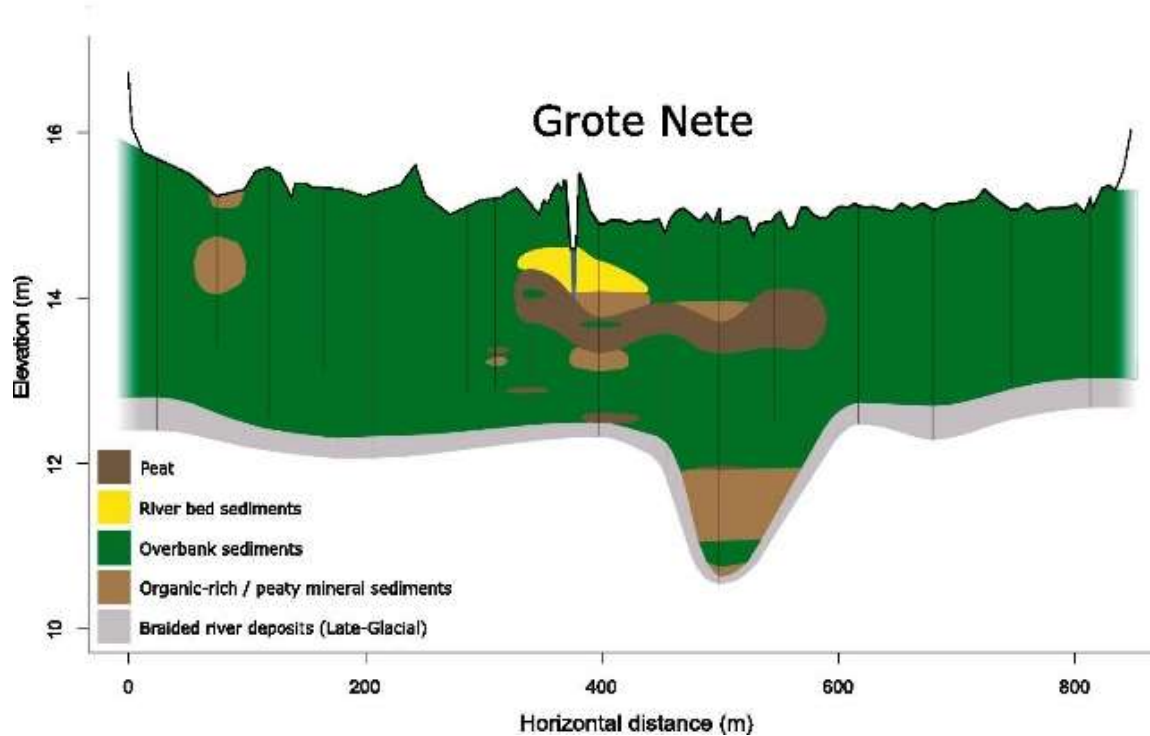
# Voorwaarden paraboolduinen

- Balans tussen
  - Beschikbaarheid van erodeerbaar zand
  - Windrichting- en sterkte
  - Vegetatie

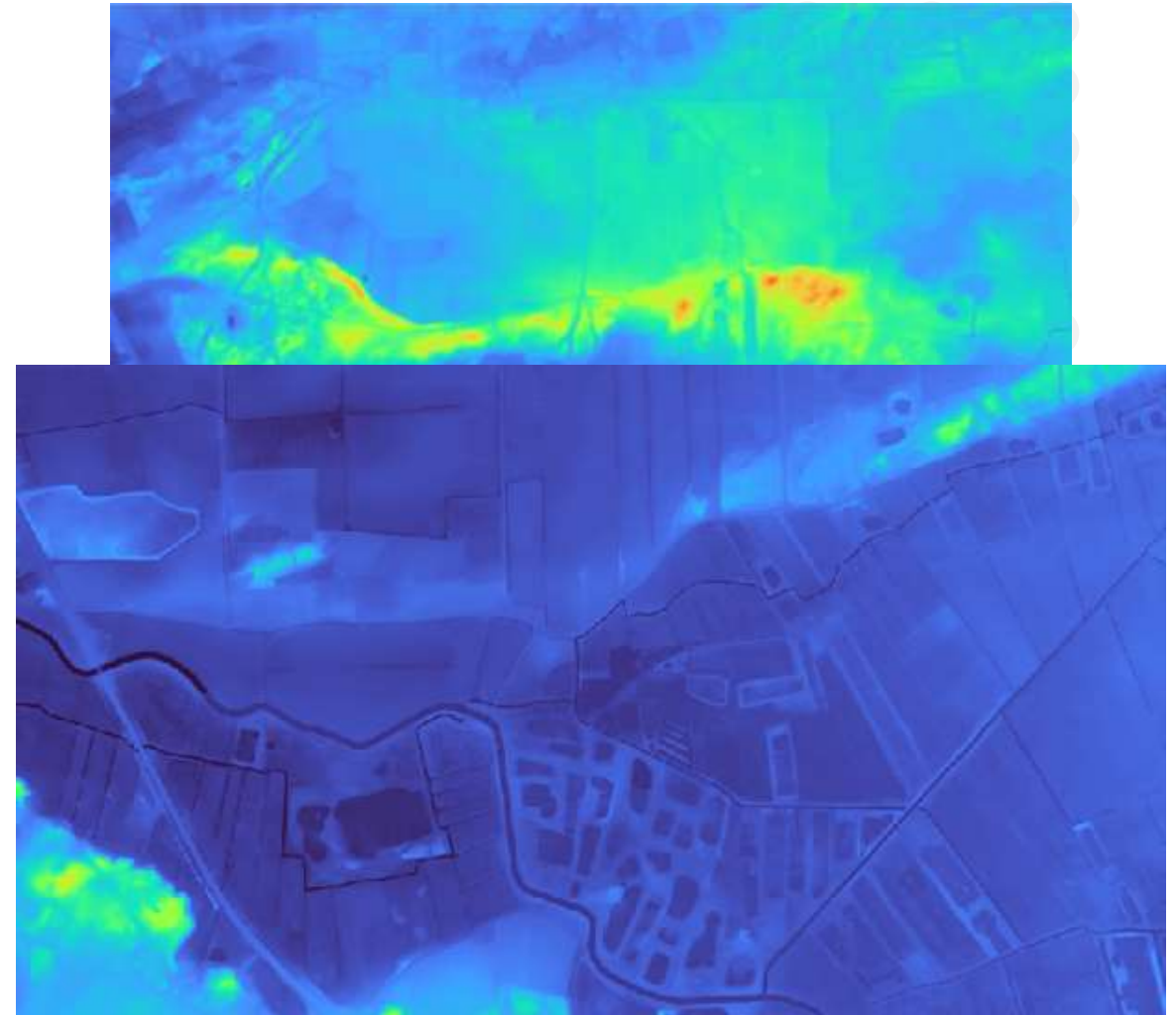
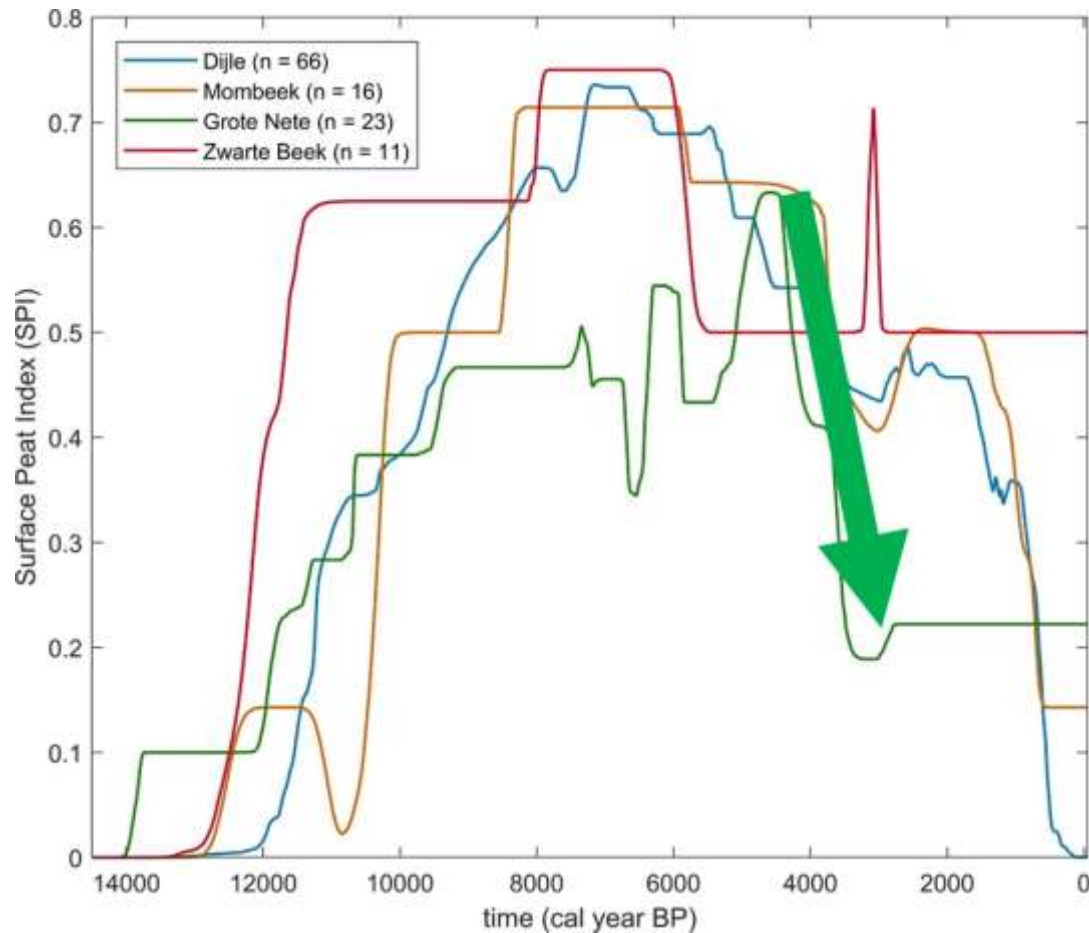
May, JH. (2014). Parabolic Dune. In: Encyclopedia of Planetary Landforms. Springer, New York, NY. [https://doi.org/10.1007/978-1-4614-9213-9\\_251-1](https://doi.org/10.1007/978-1-4614-9213-9_251-1)



# Ontwikkeling van de alluviale vlakte van de Grote Nete



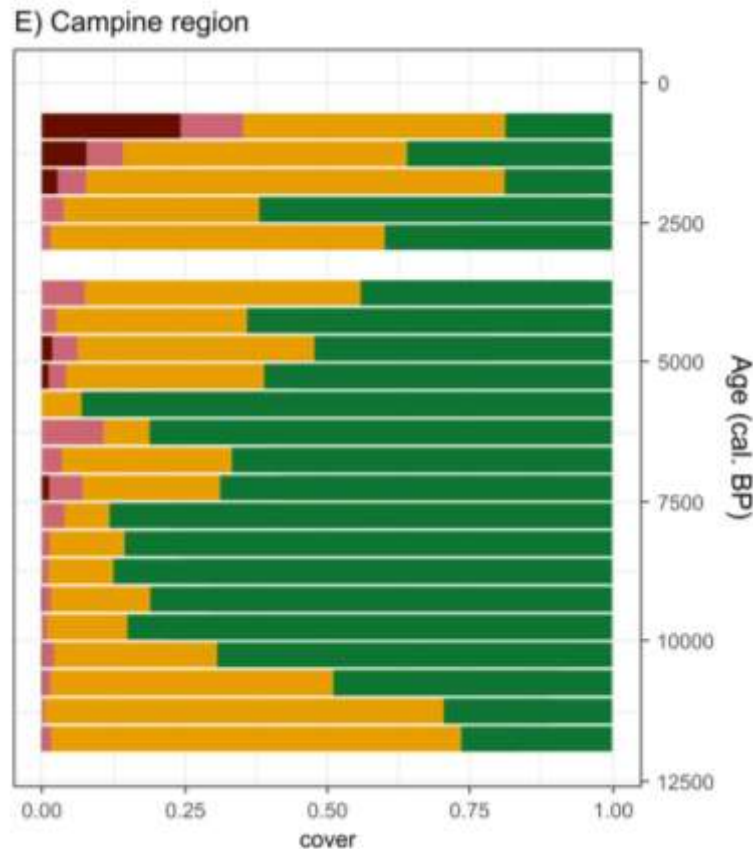
# Veengroei langsheen de Grote Nete en latere ontginning





# De mens laat invloed op landschap gelden

Ontbossing, eerst nog veel grassen, nadien ook heide en akkers



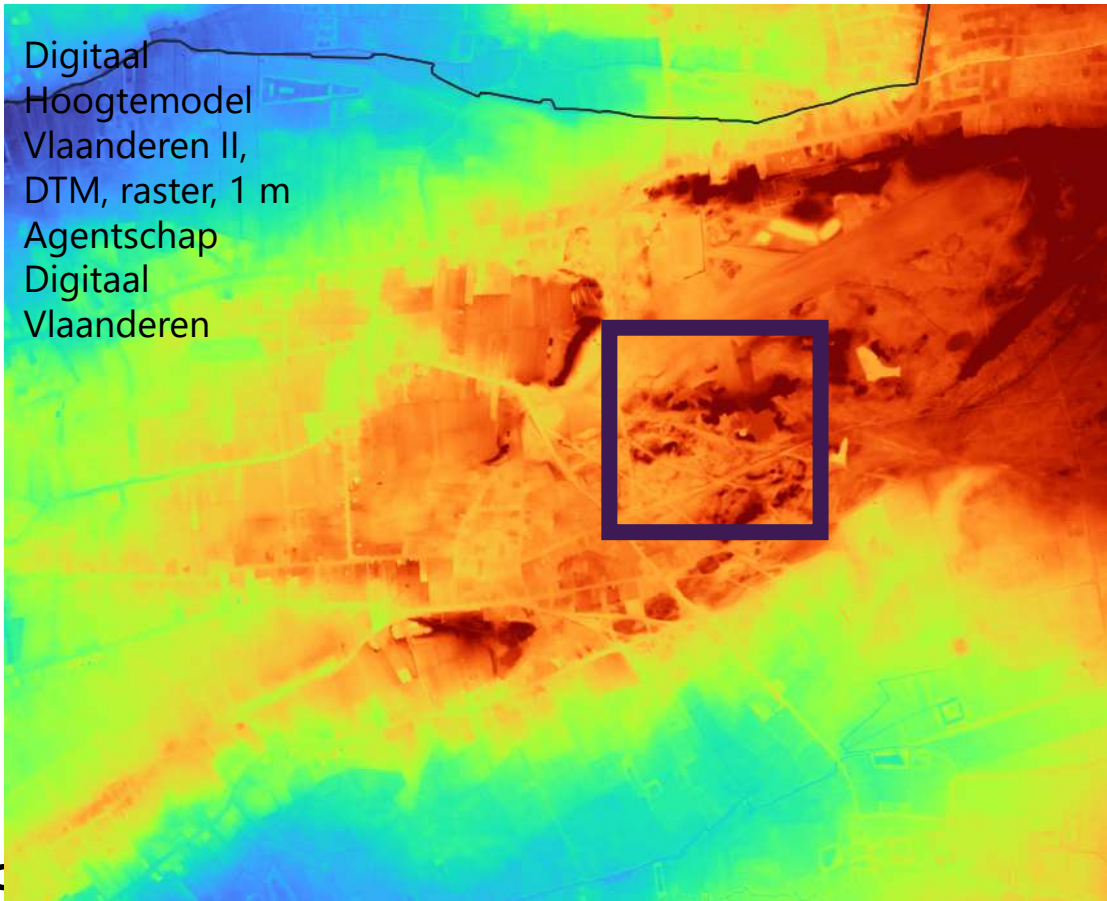
**Akkerland, heide, grasland, bos**

# Stuifzanden: topografische kaart vs. Ferraris (18de E)

Vormeloze ophoppingen van zand, tot enkele meters hoog

Ferrariskaart:

<https://www.geopunt.be/?service=https%3A%2F%2Fgeo.api.vlaanderen.be%2Fhistcart%2Fwms%3Flayers%3Dferraris>



## Copyright © SCK CEN

### PLEASE NOTE!

This presentation contains data, information and formats for dedicated use only and may not be communicated, copied, reproduced, distributed or cited without the explicit written permission of SCK CEN.

If this explicit written permission has been obtained, please reference the author, followed by 'by courtesy of SCK CEN'.

Any infringement to this rule is illegal and entitles to claim damages from the infringer, without prejudice to any other right in case of granting a patent or registration in the field of intellectual property.

### **SCK CEN**

Belgian Nuclear Research Centre

Foundation of Public Utility

Registered Office: Avenue Herrmann-Debrouxlaan 40 – BE-1160 BRUSSELS

Operational Office: Boeretang 200 – BE-2400 MOL